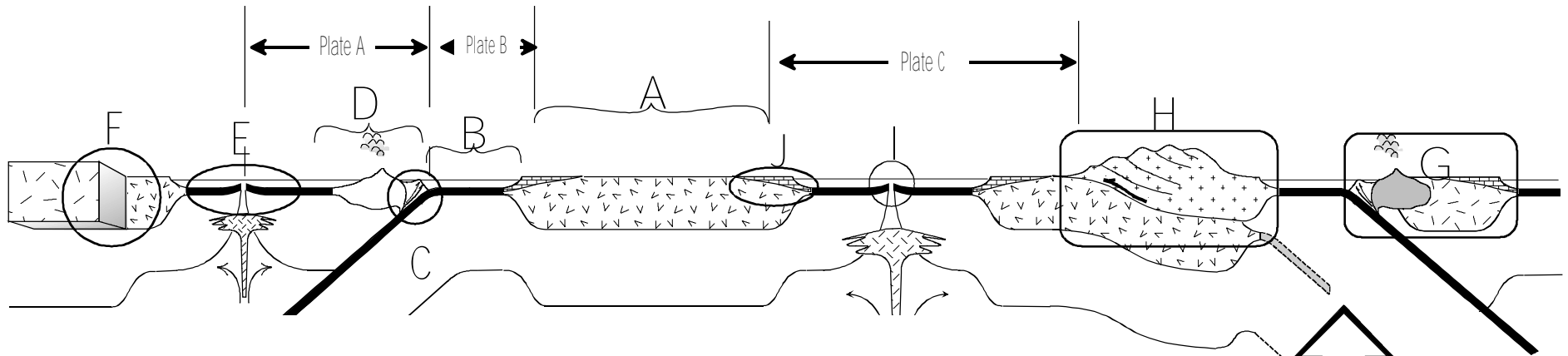
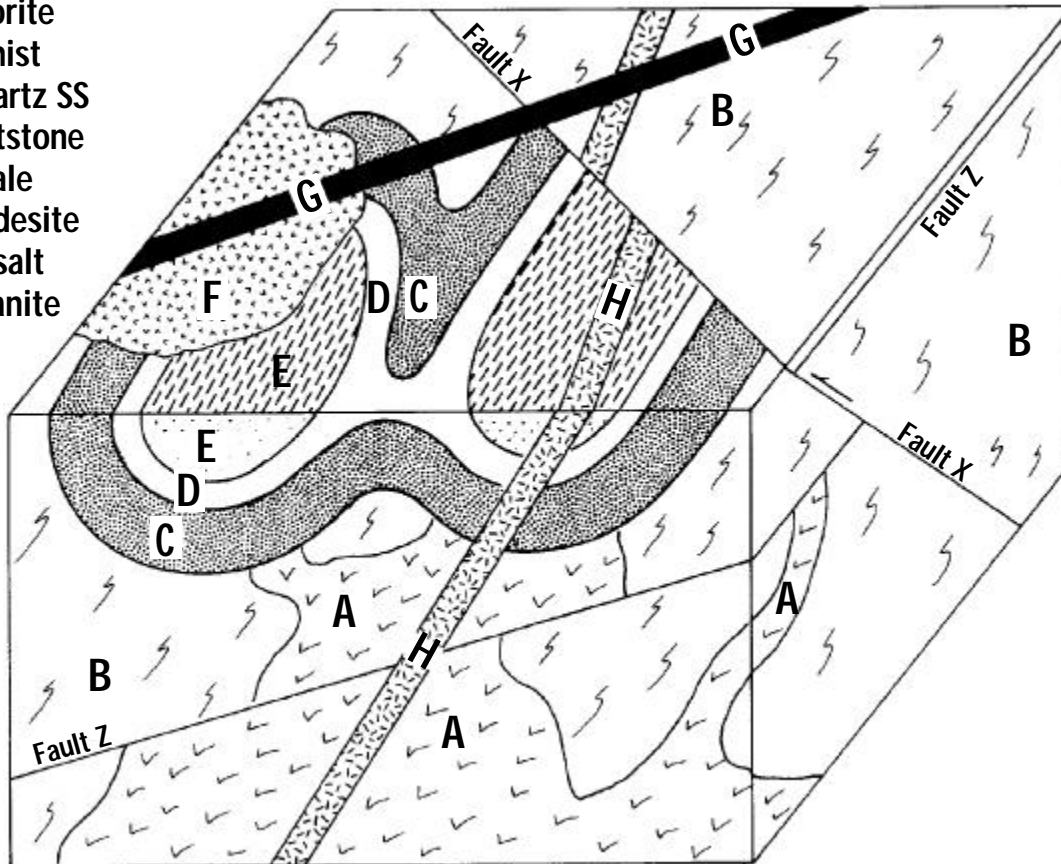


PLATE TECTONIC THEORY



INTERPRETING GEOLOGIC HISTORY

- Rock A - Diorite
- Rock B - Schist
- Rock C - Quartz SS
- Rock D - Siltstone
- Rock E - Shale
- Rock F - Andesite
- Rock G - Basalt
- Rock H - Granite



Names to choose from
to identify features on cross section

- 1A - Backarc basin
- 1B - Collision orogeny
- 1C - Convergent plate boundary
- 1D - Cordilleran orogeny
- 1E - Craton

- 2A - Divergent continental margin
- 2B - Divergent plate boundary
- 2C - Foreland
- 2D - Hinterland
- 2E - Island arc orogeny

- 3A - Melange
- 3B - Remnant ocean basin
- 3C - Rift plate boundary
- 3D - Suture zone
- 3E - Transform boundary