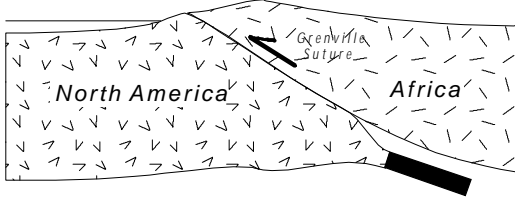


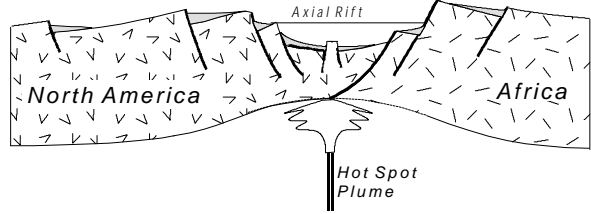
# Divided Into Fourteen Stages A - M

Lynn S. Fichter, 1993

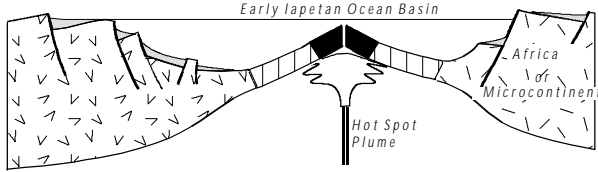
**A - Proterozoic (1.2 bya) (Protolith to 1.8)**



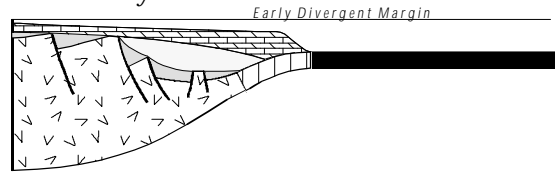
**B - Late Proterozoic**



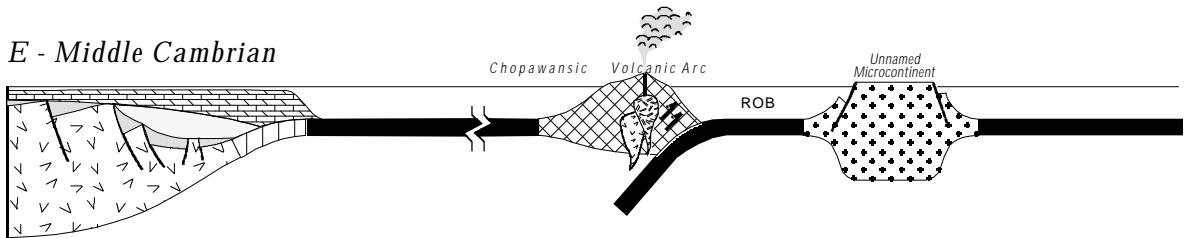
**C - Earliest Cambrian**



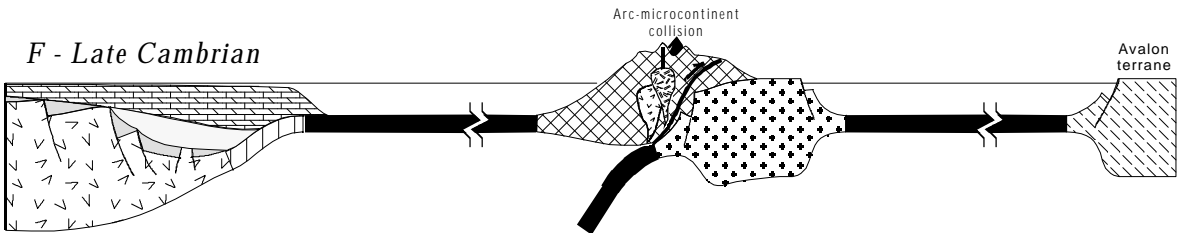
**D - Early Cambrian**



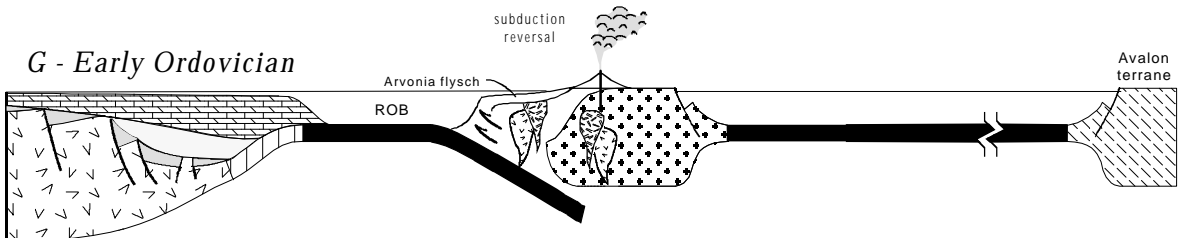
**E - Middle Cambrian**



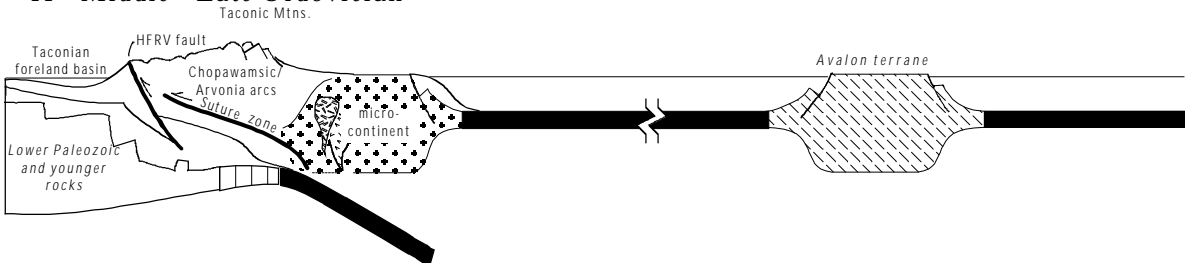
**F - Late Cambrian**



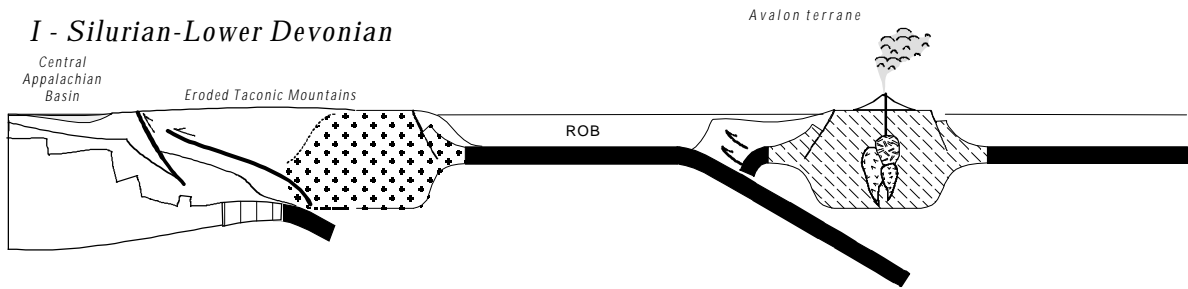
**G - Early Ordovician**



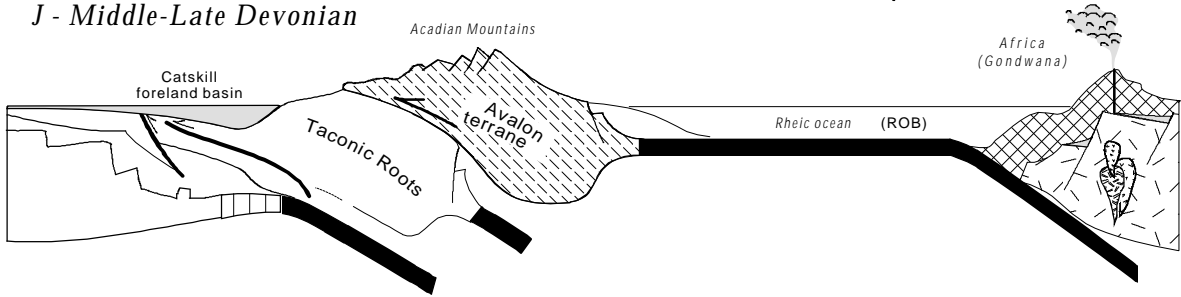
**H - Middle - Late Ordovician**



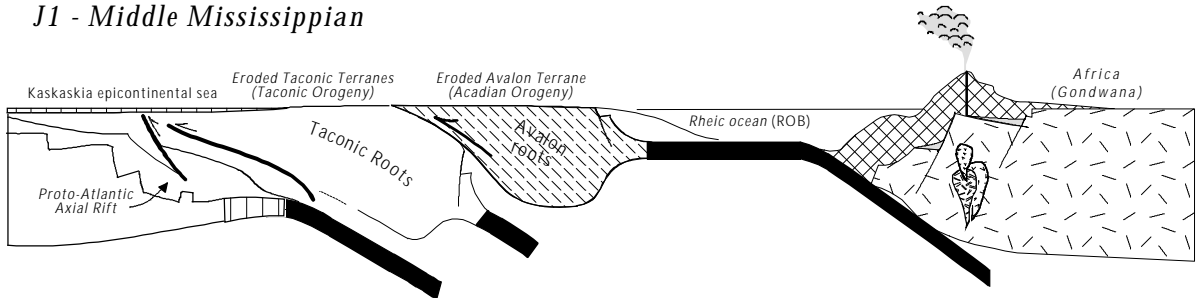
**I - Silurian-Lower Devonian**



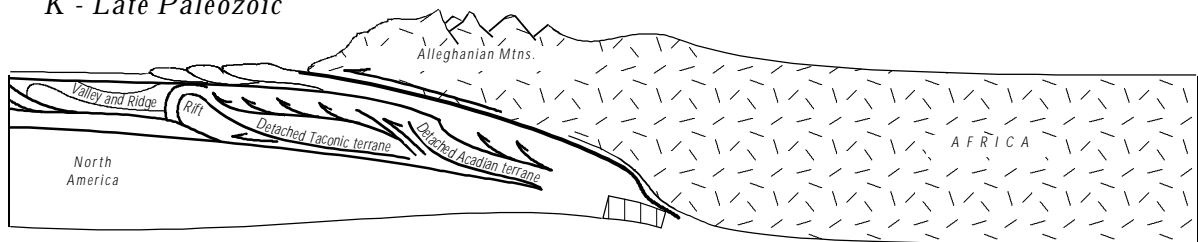
**J - Middle-Late Devonian**



**J1 - Middle Mississippian**

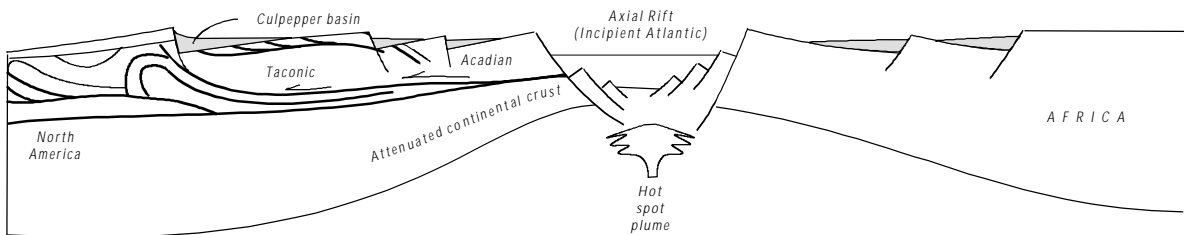


**K - Late Paleozoic**

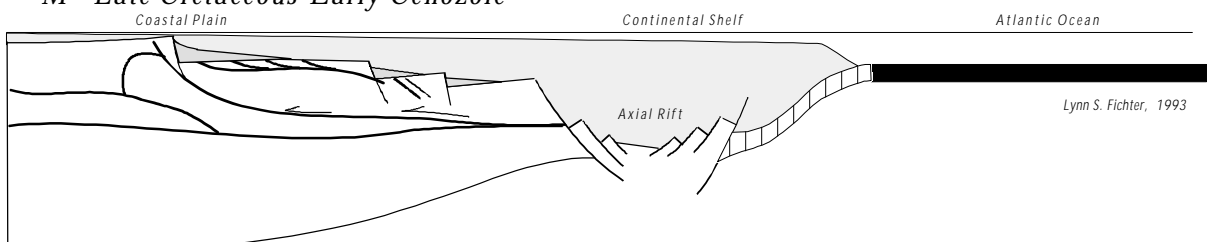


Lynn S. Fichter, 1993

**L - Triassic-Lower Jurassic**



**M - Late Cretaceous-Early Cenozoic**



Lynn S. Fichter, 1993